

PRIME LOCATION ON SPRAGUE & FANCHER



**OPEN
LISTING
FOR ALL
BROKERS**

**PARCEL A
67,927 SF**

**PARCEL B
39,563 SF**

FOR LEASE | 6,027 SF BUILDING

**5901 E SPRAGUE AVE
SPOKANE, WA 99212**

Property Details

Parcel A: 67,927 SF Yard + 6,027 SF Building

Parcel B: 39,563 SF Yard

Additional Parcel C Available: 129,989 SF

- 2 - 10' x 9'6" Grade Level Doors
- 3 - 10' x 8'5" Grade Level Doors
- 3 Phase Power

- Office: Gas Forced Air and Air Conditioning
- Shop: Gas Radiant Heaters
- Fenced and Paved With Secure Access

Property Details

Prime location on the corner of Sprague and Fancher. Excellent access to I-90 and exposure to 19,000+ vehicles daily.

Lease Rate

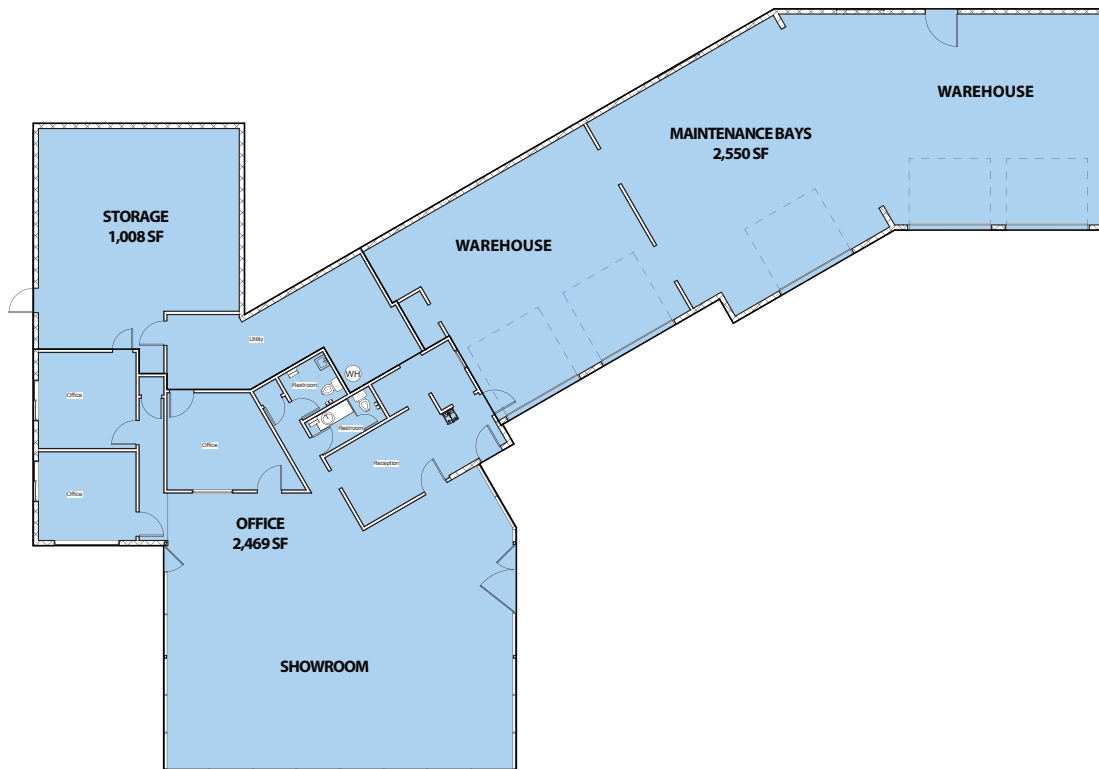
Parcel A: \$9,438 /MO/NNN

Parcel B: \$3,165 /MO/NNN

FOR LEASE | OFFICE / WAREHOUSE / YARD

5901 E SRAGUE AVE | SPOKANE, WA 99212

FLOOR PLAN



FOR LEASE | OFFICE / WAREHOUSE / YARD

5901 E SRAGUE AVE | SPOKANE, WA 99212

IMAGES



FOR LEASE | OFFICE / WAREHOUSE / YARD

5901 E SRAGUE AVE | SPOKANE, WA 99212

AVAILABLE LEASE AREA & MAP

