

11589 W. EXECUTIVE DRIVE

EXECUTIVE COMMERCIAL CENTER | BOISE, ID 83713

INDUSTRIAL SPACE FOR LEASE

TOK
COMMERCIAL



CONTACT

PETER OLIVER, SIOR CCIM

208.947.0816

peter@tokcommercial.com

CHRIS PEARSON, SIOR

208.947.0859

chris@tokcommercial.com

HIGHLIGHTS

± 2,446 SF secured yard space.

± 7,334 SF warehouse with ± 2,626 SF office.

Street-visible building and monument signage.

Single story sprinklered building with 21.5' clear height.

Located in the Executive Commercial Center industrial park.

Rear 9'x10' dock door with leveler, rear 9'x10' grade door with ramp, and front 12'x14' grade door.

Contact agents for showing

DETAILS

SUBMARKET:	West Boise
BLDG TYPE:	Industrial
ZONING:	M1-D
LOT SIZE:	3.49 Acres
YEAR BUILT:	1999
BLDG SIZE:	30,000 SF
PARKING:	Ample

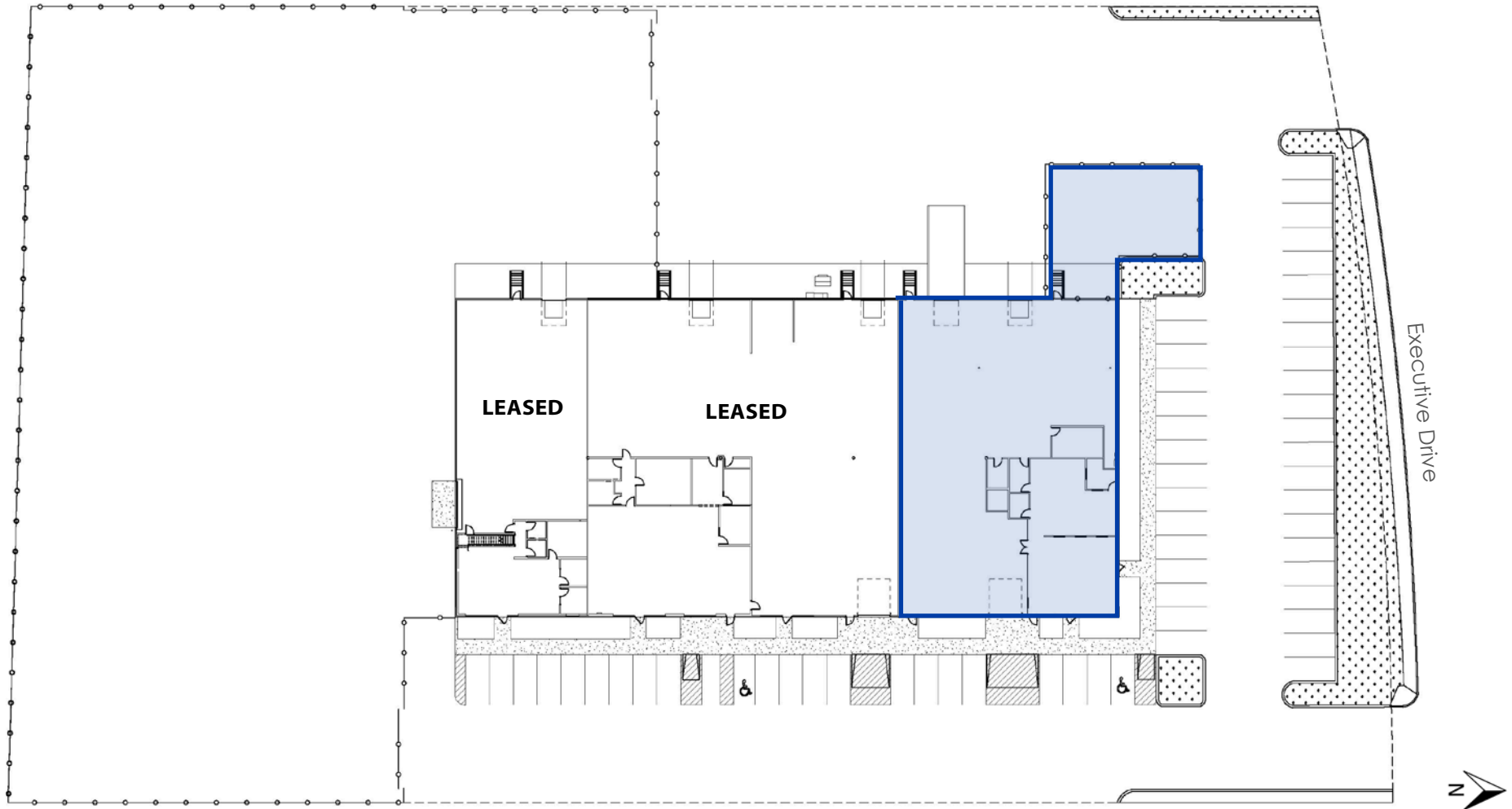


AVAILABLE SPACE

AVAILABILITY: Immediately
LEASE TERM: 3-5 Years
LEASE TYPE: NNN
ESTIMATED NNNs: \$0.22/SF/Mo.

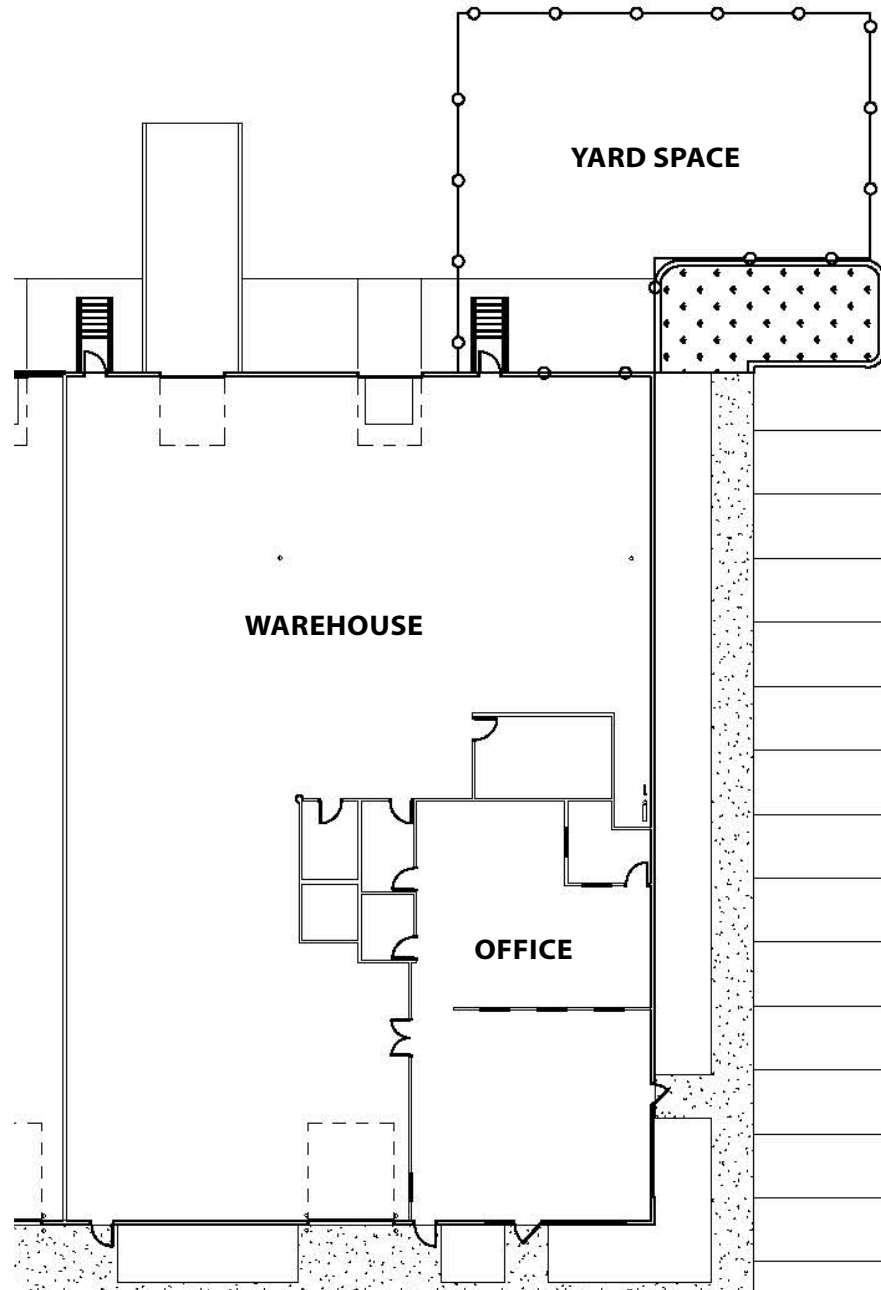
CLEAR HEIGHT: 21'-6"
POWER: 3-phase
DOCK DOORS: 1- 9'x10'
GRADE DOORS: 1- 12'x14', 1- 9'x10'

SPACE	SIZE
Warehouse	± 7,334 SF
Office	± 2,626 SF
Total Space	± 9,960 SF
Yard Space	± 2,446 SF
Monthly Base Rent:	\$9,975.00 + NNN Expenses



11589 W EXECUTIVE DRIVE

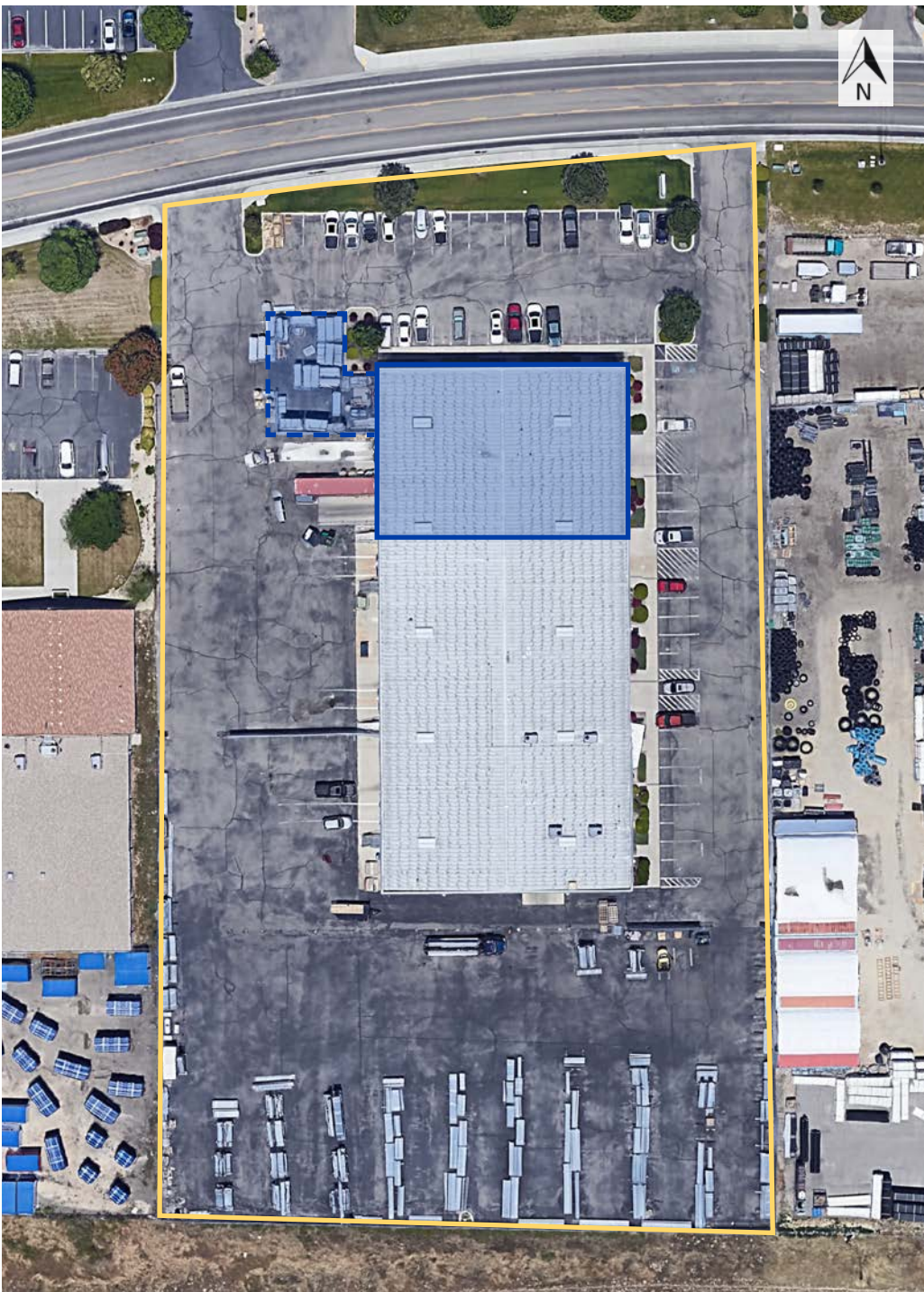
FLOOR PLAN



11589 W EXECUTIVE DRIVE

UPDATED: 10.17.2023 THIS PROPERTY IS EXCLUSIVELY MARKETED BY TOK BOISE LLC DBA TOK COMMERCIAL. This information was obtained from sources believed reliable but cannot be guaranteed. Any opinions or estimates are used for example only.

TOKCOMMERCIAL.COM



11589 W EXECUTIVE DRIVE

UPDATED: 10.17.2023 THIS PROPERTY IS EXCLUSIVELY MARKETED BY TOK BOISE LLC DBA TOK COMMERCIAL. This information was obtained from sources believed reliable but cannot be guaranteed. Any opinions or estimates are used for example only.



11589 W EXECUTIVE DRIVE

UPDATED: 10.17.2023 THIS PROPERTY IS EXCLUSIVELY MARKETED BY TOK BOISE LLC DBA TOK COMMERCIAL This information was obtained from sources believed reliable but cannot be guaranteed. Any opinions or estimates are used for example only.