

# FOR LEASE

216 S. 6th Ave Suite B  
PASCO, WA



13,843 WAREHOUSE SF  
1,157 OFFICE SF

**\$.68 PER WAREHOUSE SF**  
**TBD PER OFFICE SF**

## MORE DETAILS

- Available Space: 15,000 SF
- Planned Office: 1,157 SF
- Warehouse: 13,843 SF

## PROPERTY FEATURES

- New Construction - **Now Available**
- Heavy Industrial Zone
- Suspended Gas Heat Units
- Motion Activated LED Lights in Warehouse
- 3 Phase Power
- 36' Clear Height
- 3 Grade Doors 16' x 16'
- Fully Insulated
- Fire Sprinkler System



**DERRICK STRICKER CCIM/SIOR**

Derrick@naitcc.com

509.430.8533 Cell

509.943.5200 Office

509.943.5244 Fax



**NAI Tri-Cities**

Commercial Real Estate Services, Worldwide.

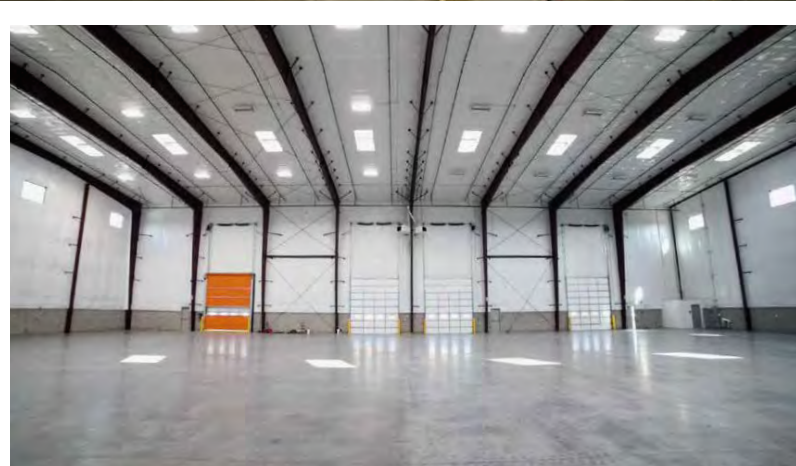
NAI Group LLC 89 Gage Blvd., Richland, WA 99352

**[www.NAITri-Cities.com](http://www.NAITri-Cities.com)**

Above information from reliable sources, but not guaranteed, offered subject to errors, omissions, previous sale, change in price and withdrawal without notice.

# FOR LEASE

PASCO, WA



**DERRICK STRICKER CCIM/SIOR**

Derrick@naitcc.com

509.430.8533 Cell

509.943.5200 Office

509.943.5244 Fax



**NAI Tri-Cities**

Commercial Real Estate Services, Worldwide.

NAI Group LLC 89 Gage Blvd., Richland, WA 99352

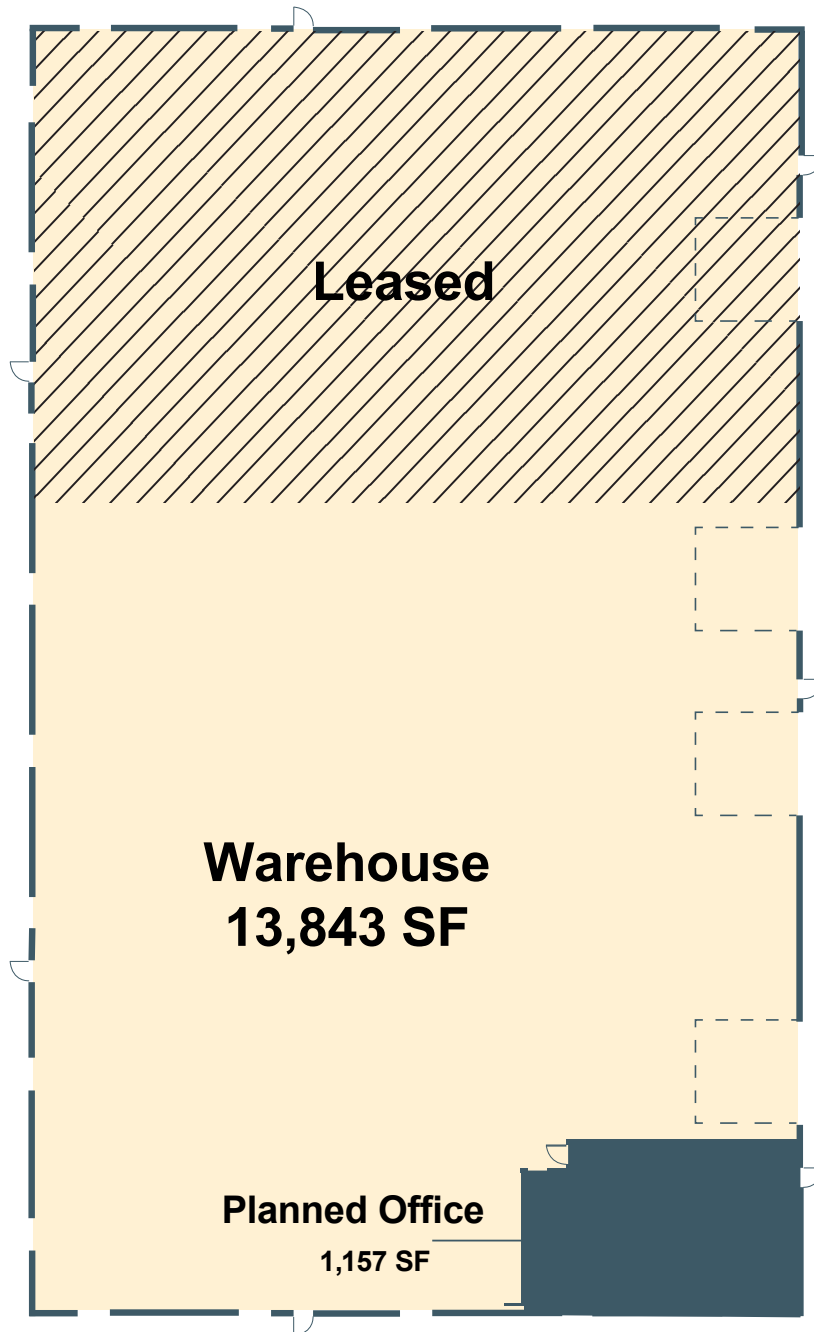
**[www.NAITri-Cities.com](http://www.NAITri-Cities.com)**

Above information from reliable sources, but not guaranteed, offered subject to errors, omissions, previous sale, change in price and withdrawal without notice.

# FOR LEASE

216 S. 6TH AVE  
PASCO, WA

## FLOOR PLAN



**DERRICK STRICKER CCIM/SIOR**

Derrick@naitcc.com

509.430.8533 Cell

509.943.5200 Office

509.943.5244 Fax



**NAI Tri-Cities**

Commercial Real Estate Services, Worldwide.

NAI Group LLC 89 Gage Blvd., Richland, WA 99352

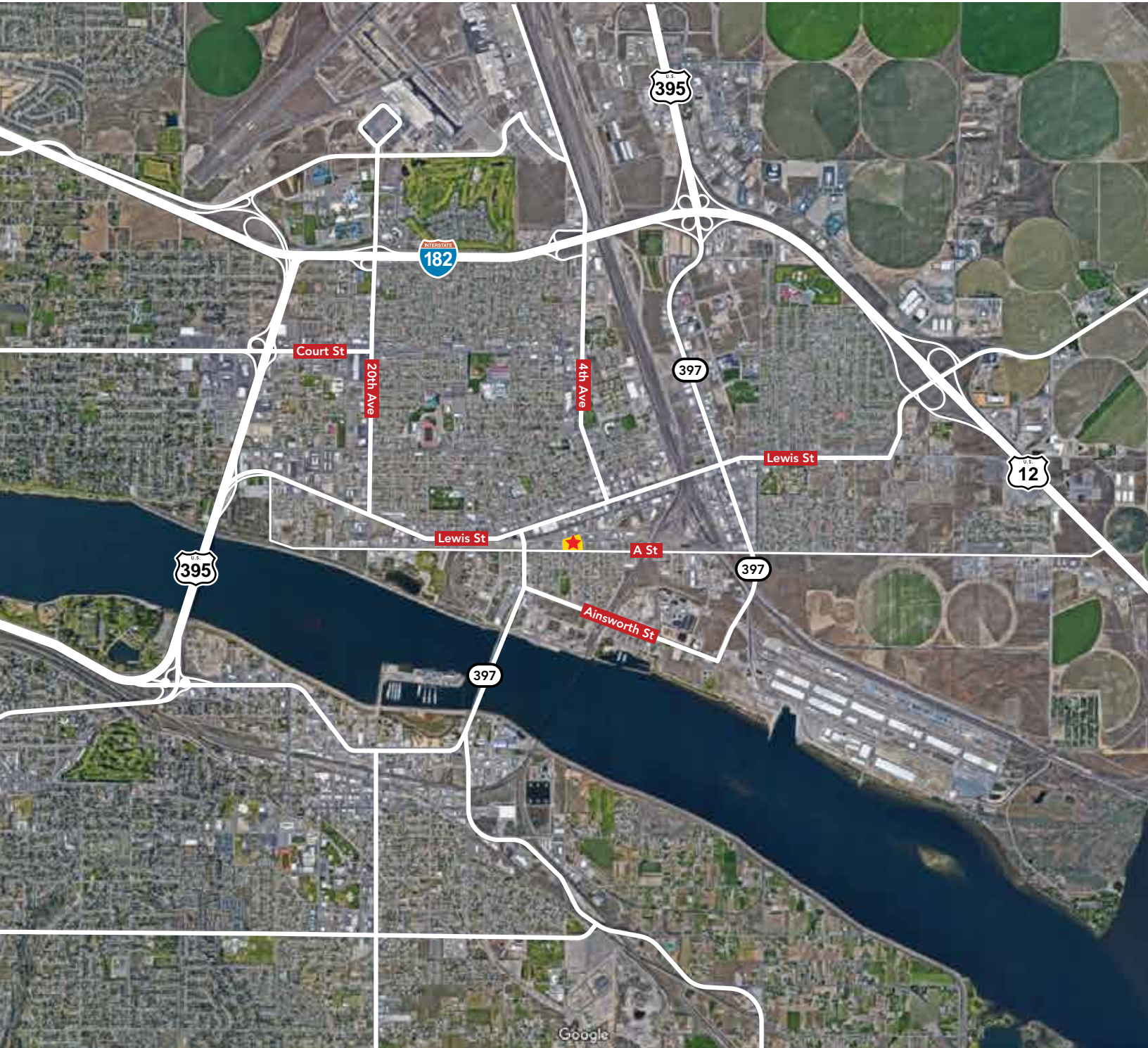
[www.NAITri-Cities.com](http://www.NAITri-Cities.com)

Above information from reliable sources, but not guaranteed, offered subject to errors, omissions, previous sale, change in price and withdrawal without notice.



# FOR LEASE

PASCO, WA



Derrick@naitcc.com  
509.430.8533 Cell  
509.943.5200 Office  
509.943.5244 Fax



## NAI Tri-Cities

Commercial Real Estate Services, Worldwide.  
NAI Group LLC 89 Gage Blvd., Richland, WA 99352

[www.NAITri-Cities.com](http://www.NAITri-Cities.com)

Above information from reliable sources, but not guaranteed, offered subject to errors, omissions, previous sale, change in price and withdrawal without notice.